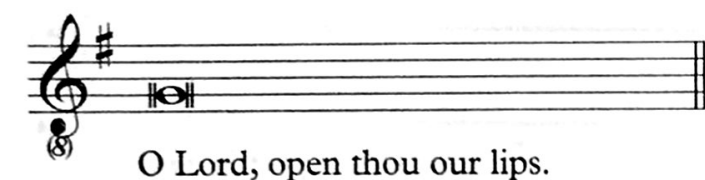


Preces and Responses

Music: WILLIAM SMITH (1603–1645)
arranged for four voices by EDWARD TAMBLING

Preces

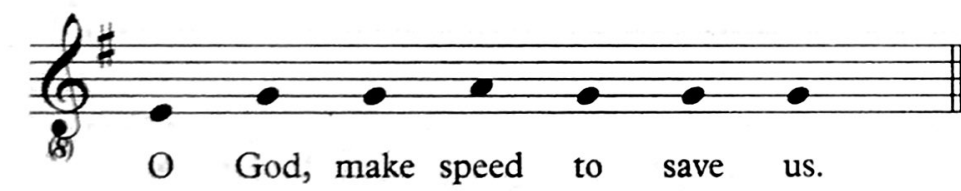


O Lord, open thou our lips.



And our mouth shall shew forth thy praise.

shall shew forth thy praise.



O God, make speed to save us.



O Lord, make haste to help us. Glo - ry be to the



Fa - ther, and to the Son: and to the Ho - ly Ghost: and to the Ho - ly Ghost: to the Ho - ly Ghost:

is now, and

As it was in the be - gin - ning, is now, and

is now,

and e - ver shall be: world with-out end. A -

e - ver shall be: world with-out end, world with-out end. A -

e - ver shall be: shall be, world with-out end. A -

and e - ver shall be: world with-out end. A -

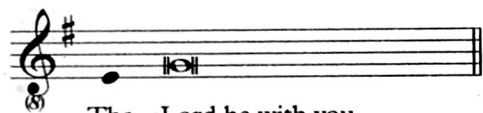
- men. Praise ye the Lord.

- men. Praise ye the Lord, the Lord.

- men. Praise ye the Lord.

- men. Praise ye the Lord.

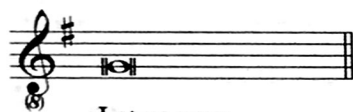
The Responses



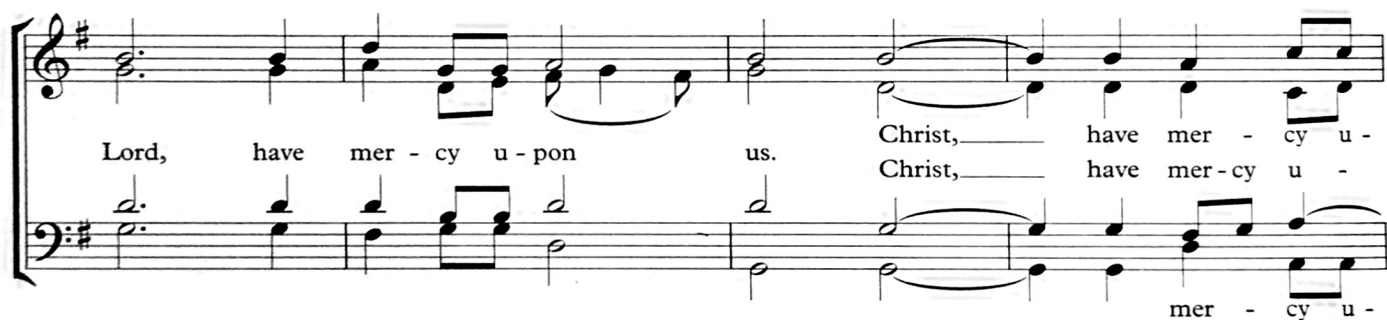
The Lord be with you.



And with thy spi - rit.



Let us pray.

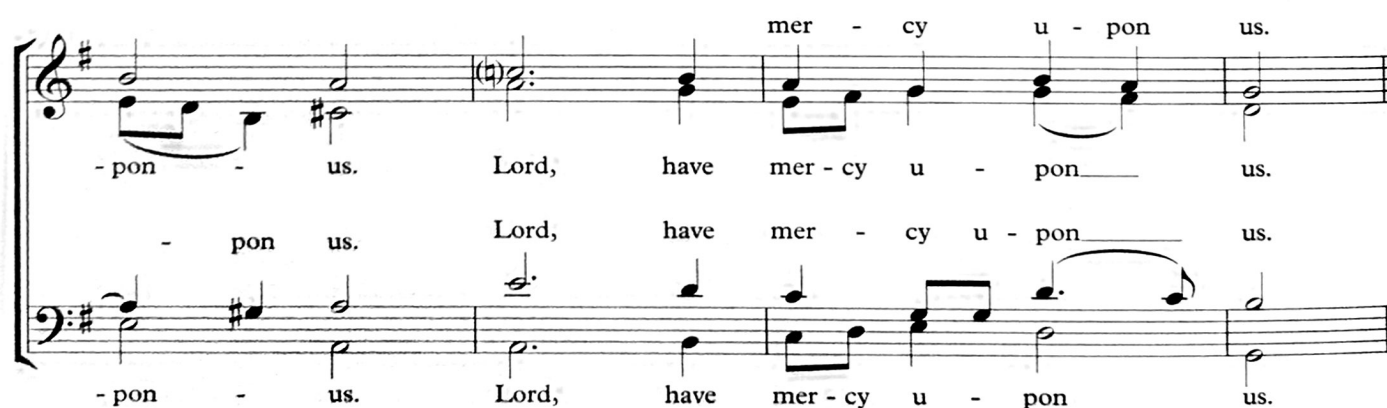


Lord, have mer - cy u - pon us.

Christ, have mer - cy u -

Christ, have mer - cy u -

mer - cy u -



- pon - us.

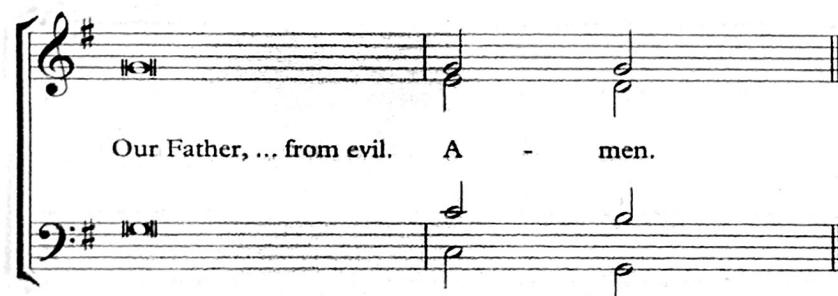
Lord, have mer - cy u - pon us.

- pon us.

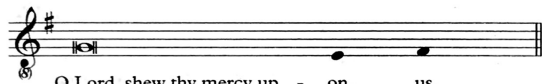
Lord, have mer - cy u - pon us.

- pon - us.

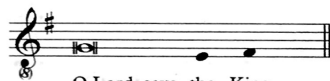
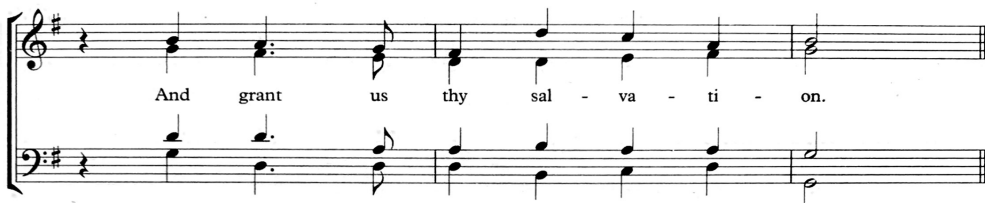
Lord, have mer - cy u - pon us.



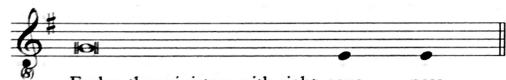
Our Father, ... from evil. A - men.



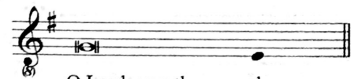
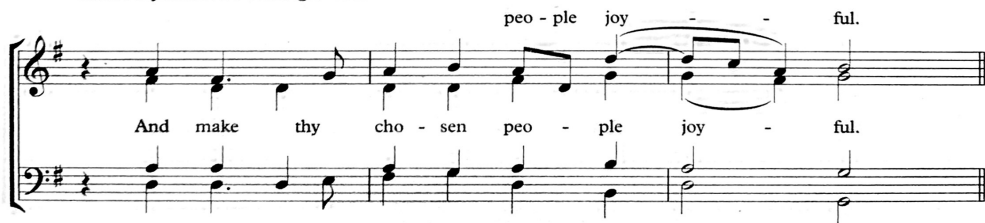
O Lord, shew thy mercy up - on us.



O Lord, save the King.

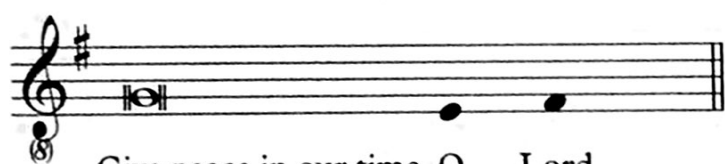


Endue thy ministers with right eous - ness.



O Lord, save thy peo - ple.

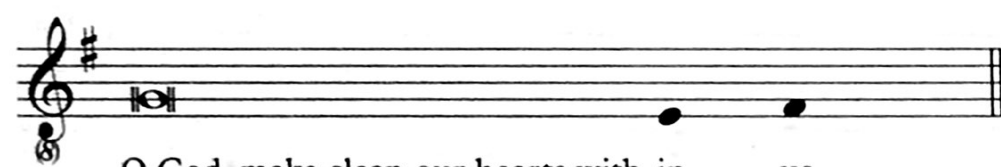




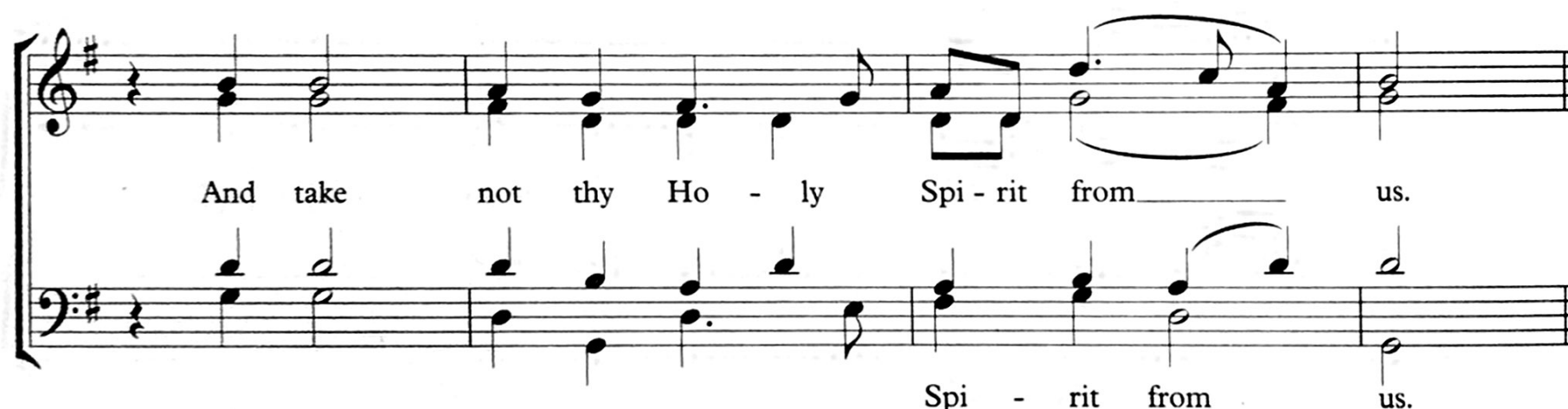
Give peace in our time, O Lord.



Be-cause there is none o-ther that fight - eth for us, but on - ly thou, O God.



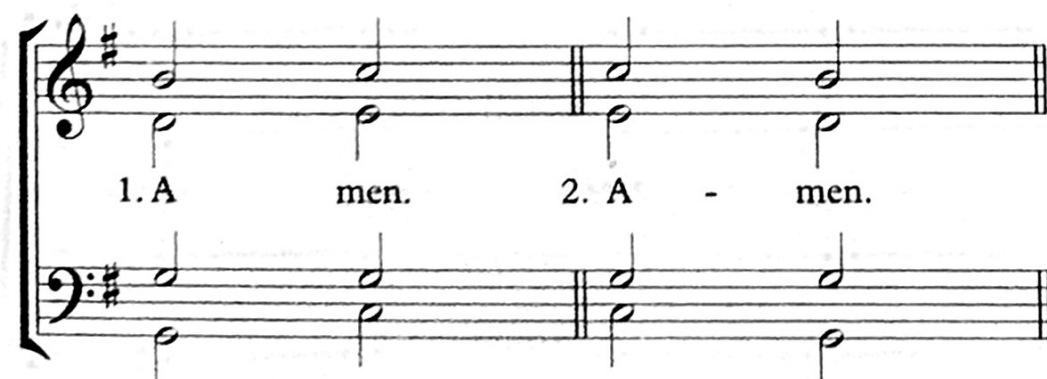
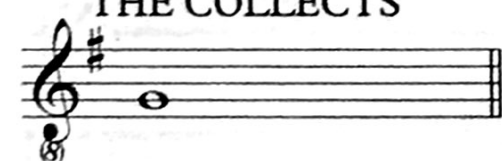
O God, make clean our hearts with-in us.



And take not thy Ho - ly Spi - rit from us.

Spi - rit from us.

THE COLLECTS



1. A men. 2. A - men.



3. A - - - - - men, A - - - - - men.

3. A - - - - - men, A - - - - - men.

3. A - - - - - men, A - - - - - men.

3. A - - - - - men, A - - - - - men.